

THE 2024 POSITIVELY AWARE HIV DRUG CHART POCKET EDITION



SPONSORED BY **Walgreens**

Each drug is recommended for use in combination with other antiretrovirals—except any single-tablet or long-acting complete regimen, or Apretude for PrEP. For a complete description of HHS drug recommendations, go to clinicalinfo.hiv.gov. Consult with a health care provider about which drug therapy and dose is appropriate for you; see drug page or package insert for complete information. Drug chart information is current as of May 13, 2024. Look up your drug by adding its name after typing positivelyaware.com/ in your browser (for example, positivelyaware.com/biktarvy).

SINGLE-TABLET REGIMENS (Complete regimen comprised of multiple drug classes)



Atripla ✓ Recommended initial regimen in certain clinical situations
600 mg efavirenz, 200 mg emtricitabine, 300 mg tenofovir DF
EFV (NNRTI), FTC and TDF (two NRTIs)
One tablet, once daily. Take on an empty stomach, preferably at bedtime.
■ Generic is available.



Biktarvy ★ Recommended initial regimen for most people with no history of Apretude (CAB-LA) for PrEP
50 mg bicitgravir, 200 mg emtricitabine, 25 mg tenofovir AF
BIC (INSTI), FTC and TAF (two NRTIs)
One tablet, once daily. Take with or without food.
► This regimen is recommended for rapid ART for someone newly diagnosed or entering care with no or minimal labs available.



Complera ✓ Recommended initial regimen in certain clinical situations if viral load <100,000 copies/mL and CD4 count >200 cells/mm³
25 mg rilpivirine, 200 mg emtricitabine, 300 mg tenofovir DF
RPV (NNRTI), FTC and TDF (two NRTIs)
One tablet, once daily. Take with a meal.



Delstrigo ✓ Recommended initial regimen in certain clinical situations
100 mg doravirine, 300 mg lamivudine, 300 mg tenofovir DF
DOR (NNRTI), 3TC and TDF (two NRTIs)
One tablet once daily. Take with or without food.



Dovato ★ Recommended initial regimen for most people except people with viral load >500,000 copies/mL, HBV co-infection, or before results of genotypic resistance or HBV testing, with no history of Apretude (CAB-LA) for PrEP
50 mg dolutegravir, 300 mg lamivudine
DTG (INSTI), 3TC (NRTI)
One tablet, once daily. Take with or without food.
► This regimen is recommended for rapid ART for someone newly diagnosed or entering care with no or minimal labs available.



Genvoya ✓ Recommended initial regimen in certain clinical situations and there is no history of Apretude (CAB-LA) for PrEP
150 mg elvitegravir, 150 mg cobicistat, 200 mg emtricitabine, 10 mg tenofovir AF
EVG (INSTI), COBI (PK booster), FTC and TAF (two NRTIs)
One tablet, once daily. Take with food.

SINGLE-TABLET REGIMENS continued (Complete regimen comprised of multiple drug classes)



Juluca ✓ Recommended as continuation therapy for people with undetectable HIV viral load for at least 6 months
50 mg dolutegravir, 25 mg rilpivirine
DTG (INSTI), RPV (NNRTI)
One tablet, once daily. Take with a meal.



Odefsey ✓ Recommended initial regimen in certain clinical situations if viral load <100,000 copies/mL and CD4 count >200/mm³
25 mg rilpivirine, 200 mg emtricitabine, 25 mg tenofovir AF
RPV (NNRTI), FTC and TAF (two NRTIs)
One tablet, once daily. Take with a meal.



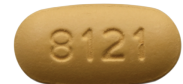
Stribild ✓ Recommended initial regimen in certain clinical situations and with no history of Apretude (CAB-LA) for PrEP
150 mg elvitegravir, 150 mg cobicistat, 200 mg emtricitabine, 300 mg tenofovir DF
EVG (INSTI), COBI (PK booster), FTC and TDF (two NRTIs)
One tablet, once daily. Take with food.



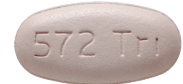
Symfi ✓ Recommended initial regimen in certain clinical situations
600 mg efavirenz, 300 mg lamivudine, 300 mg tenofovir DF
EFV (NNRTI), 3TC and TDF (two NRTIs)
One tablet, once daily. Should be taken on an empty stomach, preferably at bedtime.



Symfi Lo ✓ Recommended initial regimen in certain clinical situations
400 mg efavirenz, 300 mg lamivudine, 300 mg tenofovir DF
EFV (NNRTI), 3TC and TDF (two NRTIs)
One tablet, once daily. Should be taken on an empty stomach, preferably at bedtime.



Symtuza ✓ Recommended initial regimen in certain clinical situations; also for rapid ART for people who took Apretude (CAB-LA) for PrEP
800 mg darunavir, 150 mg cobicistat, 200 mg emtricitabine, 10 mg tenofovir AF
DRV (PI), COBI (PK booster), FTC and TAF (two NRTIs)
One tablet, once daily. Take with food.
► For people who took Apretude (CAB-LA) for PrEP, this regimen is HHS recommended for rapid ART for someone newly diagnosed or entering care with no or minimal labs available.



Triumeq ★ Recommended initial regimen for most people if HLA-B*5701 negative with no history of Apretude (CAB-LA) for PrEP
50 mg dolutegravir, 600 mg abacavir, 300 mg lamivudine
DTG (INSTI), ABC and 3TC (two NRTIs)
One tablet, once daily. One additional 50 mg tablet of Tivicay 12 hours apart when taken with certain other medications. Take with or without food.

LONG-ACTING INJECTABLE - CAPSID INHIBITOR



Sunlenca ● For heavily treatment-experienced people whose current regimen is failing
lenacapavir (LEN)
Two different initial options using oral LEN tablets and injectable LEN, followed by maintenance dose of two 463.5 mg/1.5 mL subcutaneous injections (for a total dose of 927 mg/3 mL) once every six months by a healthcare provider. It must be used as part of a regimen with another antiretroviral(s), the majority of which are taken daily.

LONG-ACTING INJECTABLE - COMPLETE REGIMEN



Cabenuva ✓ Recommended as optimization therapy for people with undetectable HIV viral load for at least 3 months on treatment
cabotegravir long-acting, rilpivirine long-acting
CAB-LA (INSTI), RPV-LA (NNRTI)
Optional one-month oral lead-in with food, then two intramuscular gluteal (butt) injections once every other month (monthly dose also available) administered by a health care provider. Take with or without food. Consists of one injection of long-acting cabotegravir and one injection of long-acting rilpivirine. See dosing information in the POSITIVELY AWARE HIV Drug Guide.

ENTRY/ATTACHMENT INHIBITORS



ATTACHMENT INHIBITOR
Rukobia ▼ For people who are heavily treatment-experienced
fostemsavir (FTR)
One 600 mg tablet twice daily. For heavily treatment-experienced people with multidrug-resistant virus on a failing HIV regimen due to resistance, intolerance, or safety considerations. Take with or without food.



ENTRY INHIBITOR: CCR5 ANTAGONIST
Selzentry ▼ For heavily treatment-experienced people who have CCR5-TROPIC virus
maraviroc (MVC)
150, 300, or 600 mg (available in 150 and 300 mg tablets), twice daily, depends on other medications used. Take with or without food.
■ Generic and brand name available for 50 mg and 300 mg tablets. Brand name available only for oral solution 20 mg/mL.



LONG-ACTING ENTRY INHIBITOR: CD4-DIRECTED POST-ATTACHMENT INHIBITOR
Trogarzo ▼ For people who are heavily treatment-experienced
ibalizumab-uiyk (IBA)
Administered once every two weeks via intravenous infusion. Treatment begins with an IV loading (starting) dose of 2,000 mg, followed by an 800 mg IV infusion or an IV push maintenance dose given every two weeks thereafter.

INTEGRASE INHIBITORS (INSTIs)



Recommended as a component of an initial regimen in certain clinical situations with no history of Apretude (CAB-LA) for PrEP
Isentress HD ✓ and **Isentress**
raltegravir (RAL)
Isentress HD: Two 600 mg film-coated tablets, once daily.
Isentress: One 400 mg film-coated tablet, twice daily. Take with or without food.



Recommended as a component of initial regimen for most people with no history of Apretude (CAB-LA) for PrEP
Tivicay ★
dolutegravir (DTG)
One 50 mg tablet, once daily for people on HIV therapy for the first time or treatment-experienced without previous INSTI resistance. Twice-daily dosing for people who have viral resistance to INSTIs or when taken with certain other medications. Take with or without food.
► This regimen is recommended for rapid ART for someone newly diagnosed or entering care with no or minimal labs available.

NUCLEOSIDE REVERSE TRANSCRIPTASE INHIBITORS (“Nukes”)



Cimduo ★

Recommended as component of initial regimen for most people when combined with Tivicay; recommended as component of initial regimen in certain clinical situations when used in other combinations

300 mg lamivudine, 300 mg tenofovir DF
3TC, TDF (two NRTIs)
One tablet, once daily. Take with or without food.

► This fixed-dose combination is recommended as a component of rapid ART for someone newly diagnosed or entering care with no or minimal labs available.



Descovy ★

Recommended as a component of initial regimen for most people

200 mg emtricitabine, 25 mg tenofovir AF;
120 mg emtricitabine, 15 mg tenofovir AF
FTC, TAF (two NRTIs)
One tablet, once daily. Take with or without food.

► This fixed-dose combination is recommended as a component of rapid ART for someone newly diagnosed or entering care with no or minimal labs available.



Emtriva ★

Recommended as a component of initial regimen for most people

200 mg emtricitabine (FTC)
One capsule, once daily. Take with or without food.

■ Generic and brand available for 200 mg oral capsules.
Brand name only available for 10 mg/mL oral solution.



Epivir ★

Recommended as a component of initial regimen for most people

lamivudine (3TC)
One 300 mg tablet, once daily; or one 150 mg tablet, twice daily. Take with or without food

■ Generic is available.

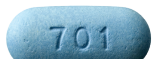


Epzicom ★

Recommended as a component of initial regimen for most people if HLA-B*5701 negative when combined with Tivicay

600 mg abacavir, 300 mg lamivudine
ABC, 3TC (two NRTIs)
One tablet, once daily. Take with or without food.

■ Epzicom brand has been discontinued; generic is available for abacavir 600 mg / lamivudine 300 mg oral tablets



Truvada ★

Recommended as a component of initial regimen for most people

200 mg emtricitabine, 300 mg tenofovir DF
FTC, TDF (two NRTIs)
One tablet, once daily. Take with or without food.

► This fixed-dose combination is recommended as a component of rapid ART for someone newly diagnosed or entering care with no or minimal labs available.
■ Generic is available.



Viread ★

Recommended as a component of initial regimen for most people

300 mg tenofovir DF (TDF)
One tablet, once daily. Take with or without food.

■ Generic and brand name available for 300 mg oral tablets.
Brand name available only for oral powder 40 mg/GM and 150 mg, 200 mg and 250 mg oral tablets.

NON-NUCLEOSIDE REVERSE TRANSCRIPTASE INHIBITORS (“Non-nukes”)



Edurant ✓

Recommended as a component of initial regimen in certain clinical situations in combination with two recommended NRTIs

25 mg rilpivirine (RPV)
One tablet, once daily. Take with a meal.



Intelence ✓

For treatment-experienced people with viral strains resistant to an NNRTI

200 mg etravirine (ETR)
One tablet, twice daily. Take following a meal.

■ Generic and brand name available for 100 mg and 200 mg oral tablets.
Brand name available only for 25mg oral tablets.



Pifeltro ✓

Recommended as a component of an initial regimen in certain clinical situations (as a component of Delstrigo, or in combination with Descovy, Truvada or Cimduo)

100 mg doravirine (DOR)
One tablet, once daily. Take with or without food.



Sustiva ✓

Recommended as a component of an initial regimen in certain clinical situations (as a component of Atripla, Symfi, or Symfi Lo, or in combination with Descovy, Truvada or Cimduo)

600 mg efavirenz (EFV)
One tablet, once daily. Take on an empty stomach, preferably at bedtime.

■ Generic and brand name available for 600 mg.
Generic available only for 50 mg and 200 mg oral tablets.

PROTEASE INHIBITORS (PIs) Boosted and unboosted



Evotaz ✓

Recommended as a component of initial regimen in certain clinical situations

300 mg atazanavir, 150 cobicistat
ATV (PI), COBI (PK booster)
One tablet, once daily. Take with food.



Prezcobix ✓

Recommended as a component of initial regimen in certain clinical situations or as a component of a preferred initial regimen for people with HIV who previously used Apretude (CAB-LA) for PrEP and are starting medication before results of resistance testing are available

800 mg darunavir, 150 mg cobicistat
DRV (PI), COBI (PK booster)
One tablet, once daily. Take with food.



Prezista ✓

Recommended as a component of initial regimen in certain clinical situations or as a component of a preferred initial regimen for people with HIV who previously used Apretude (CAB-LA) for PrEP and are starting medication before results of resistance testing are available

darunavir (DRV)
One 800 mg tablet with 100 mg Norvir (ritonavir) or 150 mg Tybost, once daily for first-time therapy and treatment-experienced adults without Prezista-related resistance; or one 600 mg tablet plus 100 mg Norvir, twice daily for treatment-experienced people with Prezista-related resistance. Prezista must be taken with Norvir or Tybost. Take with food.

■ Generic and brand name available for 600 mg and 800 mg oral tablets.
Brand available only for 75 mg and 150 mg oral tablets and 100 mg/mL oral suspension.



Reyataz ✓

Recommended as a component of initial regimen in certain clinical situations

atazanavir sulfate (ATV)
One 300 mg capsule plus 100 mg Norvir (ritonavir) or 150 mg Tybost, once daily. Take with food.

■ Generic and brand name available for 200 mg and 300 mg oral tablets.
Brand name only available for 50 mg oral packet. Generic only available for atazanavir 150 mg oral tablets.

PHARMACOKINETIC ENHANCERS (PKEs)



Norvir ✓

Used as a booster for other drugs; recommended as a component of initial regimen in certain clinical situations

ritonavir (RTV)
Used for boosting, also an antiretroviral. 100–400 mg, dosed once or twice daily with another unboosted PI. Must be taken with food.

■ Generic and brand name available for 150 mg oral tablets.
Brand name only available as Norvir 100 mg oral packet.



Tybost ✓

Used as a booster for other drugs; recommended as a component of initial regimen in certain clinical situations

150 mg cobicistat
COBI (PK booster)
Used only for boosting—not an antiretroviral. One pill daily, taken at the same time with either Prezista 800 mg or Reyataz 300 mg. Take with food.

PRE-EXPOSURE PROPHYLAXIS (PrEP)

ORAL MEDICATION

Descovy for PrEP ★

FDA approved for the prevention of HIV (PrEP)

200 mg emtricitabine, 25 mg tenofovir AF
FTC and TAF (two NRTIs)

For HIV-negative adults and adolescents weighing at least 77 pounds (35 kg) for the prevention of HIV. Take one tablet once daily, with or without food. At this time, Descovy for PrEP is not FDA approved for the prevention of HIV for individuals assigned female at birth.



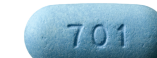
ORAL MEDICATION

Truvada for PrEP ★

FDA approved for the prevention of HIV (PrEP)

200 mg emtricitabine/300 mg tenofovir DF
FTC and TDF (two NRTIs)

For HIV-negative adults and adolescents weighing at least 77 pounds (35 kg), one tablet once daily, with or without food.
■ Generic is available.



LONG-ACTING INJECTABLE

Apretude ●

FDA approved for the prevention of HIV (PrEP)

cabotegravir extended-release injectable suspension (CAB-LA)
For HIV-negative adults and adolescents weighing at least 77 pounds (35 kg). Daily oral lead-in therapy for about a month is optional before injections begin, consisting of a 30 mg tablet of cabotegravir. One long-acting intramuscular gluteal (butt muscle) 600 mg injection monthly for the first two months and then one injection every 2 months thereafter. No food restrictions.



SPONSOR OF THE 2024 POSITIVELY AWARE HIV DRUG CHART POCKET EDITION

For a list of Walgreens pharmacies that specialize in HIV/AIDS care and other resources, go to HIV.walgreens.com. See full prescribing information, including boxed warnings, at daily.med.nlm.nih.gov.

ORDER MORE COPIES of the POSITIVELY AWARE HIV Drug Chart Pocket Edition or the HIV Drug Guide, go to positivelyaware.com/subscribe. View the complete HIV Drug Guide at positivelyaware.com.



ORDER MORE COPIES of the POSITIVELY AWARE HIV Drug Chart Pocket Edition or the HIV Drug Guide—in English and Spanish. Go to positivelyaware.com/subscribe. View the complete HIV Drug Guide at positivelyaware.com.